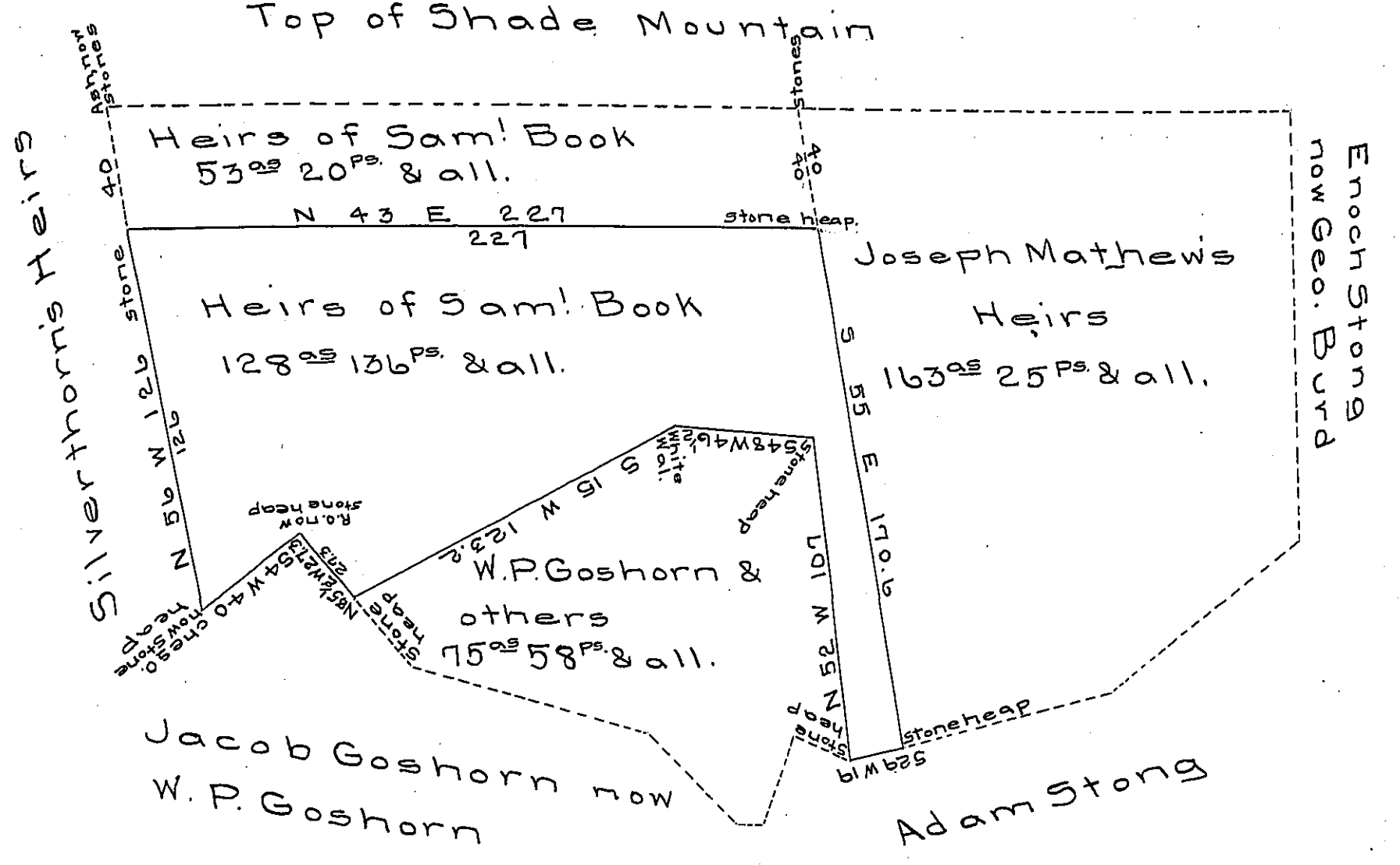


Top of Shade Mountain



A draft of a tract of land situated in the township of Dublin now Tell, County of Huntingdon containing one hundred twenty eight acres, one hundred & thirty six perches and the usual allowance of six percent for rods & surveyed for the heirs of Saml Book (dec.) the 14th day of May 1890. It being a part of a larger tract of four hundred and twenty acres and seventy nine perches & all. originally survey in pursuance of a warrant granted to Mathew Ritchie June 5th 1794.

Charles W. Ramsey (surv.)

To Thos. J. Stewart
Secretary of Internal
Affairs

Approved, June 19th 1890.
John E. Ketterman
C.S.

IN TESTIMONY that the above is a copy of the original remaining on file in the Department of Internal Affairs of Pennsylvania, made conformably to an Act of Assembly approved the 16th day of February, 1833, I have hereunto set my Hand and caused the Seal of said Department to be affixed at Harrisburg, this eighteenth day of December 1906.

Charles W. Ramsey
Secretary of Internal Affairs.